



Plants / Humans Including Animals

What world resources do we use?

What do plants need to stay alive?



air



water



light

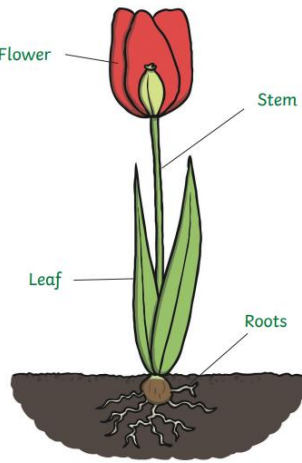
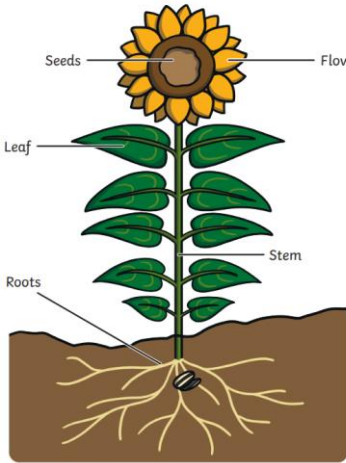


nutrients



warmth

Parts of a plant



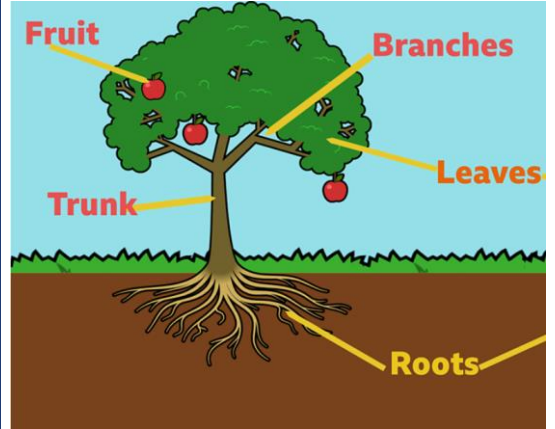
Roots take water from the ground.

Flower produces seeds and blooms.

Leaves help plant collect sunlight (food).

Stem carries water and nutrients.

Parts of a Tree



Fruit The flowering part of the tree which turns to fruit.

Plants in local habitats



Daffodil



Sycamore



Dandelion



Lettuce



Did you know some tree's lose their leaves?

Deciduous Trees lose their leaves. In autumn the leaves change colour and fall off.



In winter deciduous trees have no leaves on their branches. For example:



maple



oak



beech

Evergreen Trees or plants has leaves all around the year.



pine



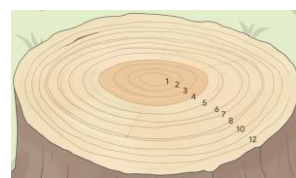
fir



spruce

Fun Facts

You can find out how old trees are by counting the tree rings – this is called dendrochronology



Vocabulary Tier 3

Sycamore, nutrients, warmth, roots, stem, leaves, deciduous, evergreen, maple, oak, beech, pine, fir, spruce, dendrochronology

Vocabulary Tier 2

Local, habitat, plant, flower, fruit, branch

